

## Cultural Specialty Camps *continued*

### Young Performers Theater Camp

Youth with an expressed interest in the theater and related arts will receive instruction and stage experience in one of two majors, dance or musical theater. Dance majors will receive instruction in ballet, tap, modern dance and jazz. Musical Theater majors will focus on vocal music, drama and dance. Senior Musical Theater majors will participate in either a playwriting or stagecraft workshop as well as a Shakespeare Festival Workshop. As always, Young Performers Theater Camp will finish the summer with several productions. All Dance majors will perform in a full-scale dance recital. Musical Theater majors will perform in one of three productions: Les Miserables (ages 15-18), Willie Wonka (ages 13-14) or The Little Mermaid (ages 9-12). All performances will be held at the Annenberg Center. This is a great opportunity for young performers to rehearse and perform in a professional space.



**Where:** Annenberg Center, 3680 Walnut St.  
**When:** Monday through Friday, 9 a.m. – 2 p.m., July 6 – August 16  
 One 6-week encampment  
**Details:** Ages 9–18; Program Capacity is 400; Audition required.  
**Fee:** \$300 (includes registration fee) for entire camp includes instruction, t-shirt, DVDs, most costume items, lunch, snack and beverages. Bus service is an additional \$150.00. Registration ends on May 7, 2010. Register online at [www.performingartspdr.org](http://www.performingartspdr.org)  
**Contact:** Tom Dignam, (215) 685-2217

### Introduction to the Performing Arts Camp

This program is designed for those children with an expressed interest in the performing arts. Children, ages 6 to 10 will have the opportunity to take classes in singing, acting and creative movement. The campers will also perform in a presentation at the end of the six-week camp.

**Where:** Waterview Recreation Center (Rittenhouse & McMahon Sts.)  
 Holmesburg Recreation Center (4500 Rhawn St.)  
 Hawthorne Cultural Center (12th & Carpenter Sts.)  
**When:** Monday through Friday, 9 a.m. – 2 p.m., July 6 – August 13  
 One 6-week encampment  
**Details:** Ages 6–10; Program Capacity is 200; No audition required.  
**Fee:** Fee of \$180 includes lunch. Aftercare service is available until 5:00 p.m. for an additional fee. Transportation is not available for this camp. Registration ends on June 4, 2010. Register online at [www.performingartspdr.org](http://www.performingartspdr.org)  
**Contact:** Tom Dignam, (215) 685-2217

## Sports Specialty Camps

### Instructional Baseball Camp

Philadelphia Area High School Coaches and Recreation Department Staff will instruct boys and girls in baseball skills, techniques and teamwork.

**Where:** Cibotti Playground (7700 Elmwood Ave.)  
 McArdle Playground (Welsh Rd. & Tolbut St.)  
 McDevitt Recreation Center (3531 Scotts Lane)  
**When:** June 21–June 25, 9am – 1pm  
 One-week camp  
**Details:** Ages 9–12; Program Capacity is 40 per site.  
**Fee:** \$30 Fee includes t-shirt, breakfast and lunch  
**Contact:** Mike Grubb, (215) 683-3674

### Girls Instructional Softball Camp

Philadelphia Area Coaches, Philadelphia Force Professional Women's Fastpitch Softball Team, and Recreation Department Staff will instruct girls in softball skills, techniques and teamwork.

**Where:** Palumbo Recreation Center, 10th & Fitzwater Sts.,  
**When:** Monday through Friday, 9 a.m.—1 p.m., June 28–July 2  
 One-week camp  
**Details:** Ages 9–12; Program Capacity is 40 per site.  
**Fee:** \$30 Fee includes t-shirt, breakfast and lunch  
**Contact:** Mike Grubb, (215) 683-3674



## Instructional Basketball Camps

These are community-based camps instructed by area High School Coaches and Recreation Department Staff. Emphasis is on skill development and sportsmanship.

**Where:** Gathers Recreation Center (25th & Diamond Sts.)  
 Guerin Recreation Center (16th & Jackson Sts.)  
 Gambrell Recreation Center (1900 Wakeling St.)  
 Pelbano Recreation Center\* (Bustleton & Solly Aves.)  
 \*\*Rambler's Playground (G & Atlantic St.) – WEEK OF JUNE 28\*\*  
 \* All camps are co-ed except Pelbano. Pelbano is girls only.  
**When:** June 21 – June 25 9:30am – 2:30 pm  
 June 28 – July 2 \*\*RAMBLERS SITE ONLY!  
 9:00am – 2pm  
**Details:** Ages 9–12; Program Capacity is 30 per site.  
**Fee:** \$30 includes t-shirt, breakfast and lunch  
**Contact:** Mike Grubb, (215) 683-3674

### Golf Camp

This is an instructional camp for beginning golfers that teaches basic skills, rules, etiquette and different types of scoring. Local Golf Professionals provided by the PGA Philadelphia Section will conduct the clinics at the driving range. Staff will include local college players and high school players. Campers receive 12 hours of lessons.

**Where:** Burholme Driving Range,  
 Umbria Street Golf Center  
 Cobbs Creek Golf Course  
**When:** Monday through Friday, 9:30 a.m.—2 p.m., July 6–August 7  
 Five 1-week encampments  
**Details:** Ages 11–15; Program Capacity is 30.  
**Fee:** \$60 per session  
**Contact:** Jim Marino, (215) 683-3686

### Mini-Golf Camp

The goal of this camp is to introduce the game of golf to beginners, to teach basic skills, to learn rules and etiquette and to have fun learning a game that can provide a lifetime of enjoyment. Local Golf Professionals provided by the PGA Philadelphia Section will conduct the clinics at the driving range. Staff will include local college players and high school players. Each participant will enjoy unlimited hitting at the driving range and all participants play miniature golf. Prizes and participation certificates will be given to all campers.

**Where:** Burholme Driving Range, 401 Cottman Avenue  
**When:** Monday through Friday, 9 a.m.—12 p.m. and 11:30 a.m.—2:30 p.m.  
 June 28–July 2; One-week camp  
**Details:** Ages 7–10; Program Capacity is 30 per session.  
**Fee:** \$30  
**Contact:** Jim Marino, (215) 683-3686

### Soccer Start Camp

The goal of the Soccer Start Camp is to instill a spirit of cooperation, build self-esteem, and encourage healthy competition and to develop athletic abilities in youth living in under-served areas. Instruction will consist of skill training, drills and small-sided games with the emphasis on fun and learning the fundamentals of the game of soccer. The camps are a cooperative effort of the Philadelphia Department of Recreation and the Eastern Pennsylvania Youth Soccer Association.

**Where:** Lee Cultural Center, 44th St. & Haverford Ave.  
**When:** Monday through Friday, 8:30 a.m. – 12:30 p.m., June 21–June 25  
 One-week camp  
**Details:** Ages 6–11; Program Capacity is 120. Slots are available.  
**Contact:** Mike Grubb at (215) 683-3674  
**Fee:** \$30 includes t-shirt, soccer sox, shin guards, water bottle, soccer ball, breakfast and lunch.

## Special Needs Camps

### Carousel House Day Camp

The program provides a complete Day Camp experience for mentally disabled campers, as well as mentally disabled campers with physical disabilities. Camp activities include swimming, arts and crafts, music, organized games, trips and special events.

**Where:** Carousel House (4300 Avenue of the Republic, 19131)  
**When:** Monday through Friday, 9 a.m.—2 p.m.  
 July 6 to July 16, July 19 to July 30, August 2 to August 13.  
**Details:** Each participant is limited to one 2-week encampment. Interview Required  
**Fee:** \$40 per week includes lunch. Transportation will not be available.  
**Contact:** Erica Young or Scott Bowen, (215) 685-0160/61/62

### Carousel House Sports Camp

This camp for mentally challenged teens and young adults will provide a medley of sports activities, including: basketball, soccer, swimming, kickball and volleyball. Campers will attend two trips per week.

**Where:** Carousel House (4300 Avenue of the Republic, 19131)  
**When:** Monday through Friday, 10 a.m.—2 p.m., August 16th to August 27th  
**Details:** Ages 16-Adult; One 2-week encampment; Interview required.  
**Fee:** \$37.50 per week; Capacity is 20. Transportation will not be available.  
**Contact:** Erica Young or Joe Ryan, (215) 685-0160/61/62

## Teen Opportunities

### Youth Environmental Stewardship Program (YES Program)

The YES program is a summer employment and learning opportunity that increases teens' awareness of nature and the ecology of their urban communities and provides them with hands-on stewardship experience in their neighborhood park or recreation center.

Participants will perform restoration and beautification projects under the direct guidance of an environmental instructor. Majority of the work is performed in an outdoor setting: wooded areas, trails, park or recreation center. There is limited classroom-type learning that includes keeping a written log of project progress and preparing with teammates for a final group oral presentation. Participants will also take a few field trips. Candidates must be interested in working outdoors in the heat and getting their hands dirty. A six-week commitment is required.

The YES program is a partnership with the PA Horticultural Society of Philadelphia Green Program and Fairmount Park.



**Where:** **Olney Recreation Center** (A & Spencer 19120) 215-685-2889, James Bell, Facility Supervisor  
**Mander Playground** (33rd & Diamond 19121) 215-685-3894, Patty McCole, Facility Supervisor  
**Laura Sims Skatehouse** (Cobbs Creek Parkway & Walnut 19139) 215-685-1995, Cassandra Campbell, Facility Supervisor  
**Papa Playground** (6839 Lansdowne Ave 19131) 215-685-0141, Judy Kelly, Facility Supervisor  
**Awbury Recreation Center** (Ardleigh & Haines 19138) 215-685-2895, Amenah Claiborne, Facility Supervisor  
**Hunting Park Recreation Center** (9th & Hunting Park 19140) 215-685-9153, Kevin Cush, Facility Supervisor  
**Ramp Playground** (Rowland & Solly 19136) 215-685-8746, Alice Dignam, Facility Supervisor  
**When:** Monday–Friday, 8 a.m.—12 p.m. or 9 a.m.—1 p.m. (varies by site)  
 July 6–August 13  
**Details:** Six-week employment program; 20 hours per week @ \$7.25 per hour. Teens and young adults ages 14-21; Program capacity is 6-8 participants per site.  
**Contact:** Barbara McCabe, (215) 683-3679

### Philadelphia's Teen Leadership Training Camp

Join 18 lucky teenagers ages 14-17 in Philadelphia's Teen Leadership Training Camp. The teens, working with experts in the field, will use a project-based learning model to create, present and evaluate their own workshops that will tour to youth in community day camps. Teens will participate in cultural trips, and explore exciting academic and career paths.

#### How to participate:

Go to our webpage: [www.phila.gov/recreation/camps/Summer\\_in\\_the\\_City\\_T.html](http://www.phila.gov/recreation/camps/Summer_in_the_City_T.html)

- Print and complete the Participant Registration and Waiver Form (pdf)
- Bring references, one academic (teacher, principal, counselor) and one community (recreation center, church, coach, community volunteer).
- A copy of a recent report card.
- A current picture of you stapled to your application packet.
- A one page typed letter explaining why you wish to participate in Philadelphia's Teen Leadership Training Camp? What are your current best leadership traits? Give an example of how you have used your leadership skills in your community and in your life?
- Call (215) 685 - 1871 after 4/15 to get the group interview dates, times and locations. Then bring your completed information to one group interview.



**Where:** Citywide  
**When:** Tuesdays, Wednesdays and Thursdays beginning July 6, 9 a.m.—3 p.m.



#### District 5: Eileen Sheridan, District Manager--(215) 685-2470

Athletic	1400 N. 26th St. (21)	685-2709
Gathers	2501 W. Diamond Street (21)	685-2710
King, Martin Luther	2101 Cecil B. Moore Ave. (21)	685-2733
Moore, Cecil B.	2551 N. 22nd St. (32)	685-9755
<b>Playgrounds</b>		
Amos	1817-59 N. 16th Street (21)	685-2708
Clemente	1800 Wallace Street (30)	685-2760
Dendy	1555 N. 10th Street (22)	215-2763
Francisville	737 Francis Street (21)	685-2762
Mander	2140 N. 33rd Street (21)	685-3894
Penrose	1101 W. Susquehanna Ave(22)	685-2711
Shuler	2700 Clearfield Street (32)	685-9750

#### District 6: Paul Dignam, District Manager--(215) 686-1784

Cohocksink	2901 Cedar Street (34)	685-9884
Cruz	1400-52 N. 5th Street (22)	685-2759
Fishtown	1202 E. Montgomery Ave. (25)	685-9885
McVeigh	400-64 E. Ontario Street (24)	685-9896
Northern Liberties	321 Fairmount Avenue (23)	686-1785
Rivera	3201 N. 5th Street (40)	685-9887
Scanlon	1099 E. Tioga Street (34)	685-9893
Shissler	1800-56 Blair Street (25)	685-9888
<b>Playgrounds</b>		
8th & Diamond	2032-62 N. 8th Street (22)	685-2761
Cione	2600 Aramingo Avenue (25)	685-9880
East Poplar	800 N. 8th Street (23)	686-1786
Hancock	147 Master Street (22)	685-9886
Nelson	2500-34 N. 3rd Street (33)	685-9890
Rambler's	4500 Decatur Street (36)	685-9999
Schmidt	113-23 W. Ontario Street (40)	685-9895
Towey	1832 N. Howard Street (25)	685-9892

#### District 7: Steve Goldman, District Manager--(215) 685-1893

Anderson, Marian	744 S. 17th Street (46)	685-6594
Murphy	300 Shunk Street (48)	685-1874
Palumbo	725 S. 10th St. (47)	686-1783
Rizzo	1101 S. Front Street (47)	685-1593
<b>Playgrounds</b>		
Barry	1800 Johnson Street (45)	685-1886
Capitolo	900 Federal Street (47)	685-1883
Chew	1800 Washington Avenue (46)	685-6596
Columbus	1200 Wharton Street (47)	685-1890
DiSilvesto	1700 South 15th Street (45)	685-1598
Guerin	2201 S. 16th Street (45)	685-1894
Shot Tower	101 Carpenter Street (47)	685-1592
Starr Garden	600 Lombard Street (47)	686-1782

#### District 8: Daryl Nelson, District Manager--(215) 685-0159

Cobbs Creek	280 Cobbs Creek Pkwy. (39)	685-1995
Mantua	3320 Haverford Avenue (04)	685-7686
Shenard	5700 Haverford Avenue (31)	685-1992
<b>Playgrounds</b>		
Baker	5431-43 Lansdowne Ave.(31)	685-0261
Clayborn & Lewis	110 N. 38th Street (04)	685-7657
Conestoga	1452 N. 53rd Street (31)	685-0146
Granahan	338-50 N. 65th Street (51)	685-1990
J. Anderson	5225 Overbrook Avenue (31)	685-0297
Lee	4328 Haverford Avenue (04)	685-7656
McAlpin	732-66 N. 36th Street (04)	685-7654
Mill Creek	4700 Brown Street (04)	685-0260
Sayre Morris	5900 Spruce Street (39)	685-1993
Tustin	5901 W. Columbia (51)	685-0258
West Mill Creek	52nd & Parrish Streets (39)	685-0186

#### District 9: Sue Buck, District Manager--(215) 685-2670

Christy	728 S. 55th Street (43)	685-1997
Francis Myers	5800 Chester Avenue (43)	685-2698
Kingsessing	4901 Kingsessing Avenue (43)	685-2695
Vare	2600 Morris Street (45)	685-1876
<b>Playgrounds</b>		
48th & Woodland	1414 S. 47th Street (43)	685-2692
Cibotti	77th St. & Elmwood Ave. (53)	685-4194
D. Finnegan	1231 S. 30th Street (46)	685-1896
Eastwick Regional	80th Street & Mars Place (53)	685-4193
J. Finnegan	69th & Grovers Streets (42)	685-4191
Markward	400-16 S. Taney Street (02)	685-6649
McCreech	6744 Regent Street (42)	685-2696
Smith	2100 S. 24th Street (45)	685-1898
Wharton Square	2300 Wharton Streets (46)	685-1888



Come Play, Learn and Grow With Us!

## Important Phone Numbers

To register, call the following camp site of your choice

### District 1: Eric Henninger, District Manager--(215) 685-0593

Fox Chase	601 Borbeck Avenue (11)	685-0575
Houseman	802 E. Godfrey Avenue (24)	685-1240
Jardel	1400 Cottman Avenue (11)	685-0596
Lawncrest	6000 Rising Sun Avenue (11)	685-0597
Pelbano	8100 Bustleton Avenue (52)	683-1975
Tarken	6250 Frontenac Street (11)	685-1226

### Playgrounds

Boyle	13024 Stevens Road (16)	685-0367
Chalfont	4330-34 Deer Path Lane (54)	685-9398
Fitzpatrick	12501 Torrey Road (54)	685-9395
Gifford	575 Tomlinson Road (16)	685-0377
Hayes	9800 Roosevelt Boulevard (15)	685-0376
Holme	9152 Academy Road (36)	685-8793
Junod	12770 Dunksferry Road (54)	685-9396
Lackman	800 Bartlett Street (15)	685-0370
Max Myers	1601Hellerman Street (11)	685-1242
Mitchell	3700 Mitchell Avenue (11)	685-9394
Palmer	Thornton & Comly Roads (54)	685-0371
Picariello	10801 Calera Road (54)	685-9393
Ramp	3300 Solly Avenue (36)	685-8746
Torresdale	9550 Frankford Avenue (14)	685-9392

### District 2: Art Comas, District Manager--(215) 685-1245

Bridesburg	4625 Richmond Street (37)	685-1247
Disston	4423 Longshore Avenue (35)	685-8750
Heitzman	2136 Castor Avenue (34)	685-1244
Samuel	2501 E. Tioga Street (34)	685-1246
Simpson	1010 Arrott Street (24)	685-1223
Vogt	4131 Unruh Avenue (35)	685-8753

### The recreation has over 140 neighborhood day camps.

The Day Camp Program is a six-week program that operates Monday through Friday from July 6 to August 15.

### Playgrounds

American Legion	6201 Torresdale Avenue (35)	685-8733
Carmella	2100 Wakeling Street (24)	685-1235
Dorsey	6501 Hegerman Street (35)	685-8734
Gambrel	1900 Wakeling Street (24)	685-1243
Glavin	3267-81 Almond Street (34)	685-9898
Lower Mayfair	3001 Robbins Avenue (35)	685-1227
Mayfair	Princeton & Battersby Sts. (35)	685-8732
McIlvain	5200 Penn Street (24)	685-1228
Monkewicz	3201 Richmond Street (34)	685-9894
Roosevelt	6455 Walker Street (35)	685-8754
Russo Park	7301 Torresdale Avenue (36)	685-8747

### District 3: Jerry Boligitz, District Manager--(215) 685-2850

Belfield	2109 W. Chew Avenue (38)	685-2220
Feltonville	231-37 E. Wyoming Ave. (20)	685-9150
Hunting Park	9th Street & Hunting Park (40)	685-9153
Lonnie Young	1100 E. Chelton Avenue (38)	685-2236
Morris Estate	1610 E. Chelton Avenue (26)	685-2891
Olney	6101 N. "A" Street (20)	685-2889

### Playgrounds

12th & Cambria	12th & Cambria Streets (33)	685-9780
Barrett	8th & Ducannon Streets (20)	685-9146
Cherashore	851-951 W. Olney Avenue (20)	685-2897
Ferko	1101 E. Cayuga Street (24)	685-1224
Happy Hollow	4740 Wayne Avenue (44)	685-2195
Piccoli	4300 Castor Avenue (24)	685-1249
Stenton Park	4600 N. 18th Street (40)	685-9147
Sturgis	200-220 W. 65th Avenue (26)	685-2877
Ziehler	200-64 E. Olney Avenue (26)	685-9145

### District 4: Lisa Anne Kenny, District Manager--(215) 685-9295

Emanuel	8500 Provident Avenue (50)	685-9253
Finley	7701 Mansfield Avenue (50)	685-2890
Gustine	4900 Ridge Avenue (29)	685-2568
Hillside	201 Fountain Street (28)	685-2595
Kendrick	5822-24 Ridge Avenue (28)	685-2584
McDevitt	3531 Scotts Lane (29)	685-2197
Simons	7200 Woolston Ave. (38)	685-3551
Water Tower	209 E. Hartwell Lane (18)	685-9296

### Playgrounds

Awbury	6101 Ardleigh Street (38)	685-2895
Houston	900 Grakyn Lane (28)	685-2597
Mallery	100-70 E. Johnson Street (44)	685-2234
Mt. Airy	7001 Germantown Ave. (19)	685-9297
Waterview	Rittenhouse & McMahon (44)	685-2229



1515 Arch Street, 10th Floor  
Phila., PA 19102

Michael A. Nutter, Mayor  
Clarence D. Ambrister, Chief of Staff  
Camille Cates Barnett, Ph.D.,  
Managing Director



The Philadelphia  
Department of Recreation

Come Play, Learn and Grow With Us

Michael DiBerardinis, Commissioner of Parks and Recreation  
Susan Slawson, Commissioner of Recreation  
Leo Dignam, Deputy Commissioner of Programs  
Marissa Washington, Deputy Commissioner of Administration  
Terri Kerwawich, Program Director  
Stuart Greenberg, Program Director

A Memorable Summer Experience

PHILADELPHIA RECREATION DEPARTMENT



The Philadelphia  
Department of Recreation

Come Play, Learn and Grow With Us!

1515 Arch Street, 10th Floor, Phila., PA 19102

**(215) 683-3600**

[www.phila.gov/recreation](http://www.phila.gov/recreation)

## 2010 Summer Camps and Programs

### Summer Camp Programs

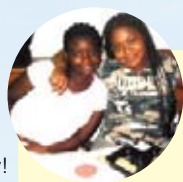
The Philadelphia Department of Recreation is proud to offer affordable, fun and safe summer programming for children of all ages in neighborhoods throughout the city! Each camp offers arts & crafts, sports, trips, educational activities, games and more. Lunch is provided.

### Neighborhood Day Camps

The Department currently has over 170 camps located at 133 recreation facilities throughout the city. Contact your neighborhood Recreation Facility or District Office (listed below), or visit us on the web at [www.phila.gov/recreation](http://www.phila.gov/recreation) for a complete listing.

**When:** Monday through Friday, 9 a.m.-3 p.m., July 6 - August 13  
Six-week program; may have individual encampments.  
**Details:** Ages 5-12; Program capacity varies.  
**Fee:** Vary  
**Contact:** (215) 685-3600

NOTE: This year's camps begin on Tuesday, July 6th. Monday, July 5th is a holiday.



### Cultural Specialty Camps

#### Summer Art Camp

This fine arts camp provides young artists with professional instruction in painting, sculpture, drawing, printmaking, enameling, pottery and silkscreen. Campers may select their specialty area and each unit is limited to 15-18 students.

**Where:** Fisher Park, 5th St. and Spencer Ave., (215) 685-2871  
Tustin Recreation Center, 59th St. and Columbia Ave., (215) 685-0258  
Jardel Recreation Center, Cottman Ave. and Pennway Sts., (215) 685-0596

**When:** Monday through Friday, 9 a.m.- 2:00 p.m., July 6 - August 13, Two-3 week encampments  
**Details:** Ages 8 -17; Program Capacity is 50 per site.  
**Fee:** \$150 per three-week encampment includes instruction, supplies, t-shirt, breakfast and lunch. Aftercare offered upon request until 5:30 p.m. for a minimal fee.  
**Contact:** Valerie Arhondakis, (215) 683-1997

## Recreation District Offices and Locations

### District 1

Rhawnhurst/Pelbano  
Bustleton & Solly Avenue, (215) 685-0593

### District 2

Bridesburg Recreation Center  
Richard & Ash Streets, (215) 685-1245

### District 3

Olney Recreation Center  
"A" & Spencer Streets, (215) 685-2850

### District 4

Watertower Recreation Center  
Hartwell & Ardleigh Streets, (215) 685-9295

### District 5

Athletic Recreation Center  
26th & Master Streets, (215) 685-2470

### District 6

Northern Liberties Recreation Center  
321 Fairmount Avenue, (215) 686-1784

### District 7

Guerin Recreation Center  
6th & Jackson Streets, (215) 685-1893

### District 8

Carousel House  
Belmont Avenue & Avenue of the Republic, (215) 685-0159

### District 9

Kingsessing Recreation Center  
50th Street & Chester Avenue, (215) 685-2670



All Information is Subject to change

**(215) 683-3600**

[www.phila.gov/recreation](http://www.phila.gov/recreation)